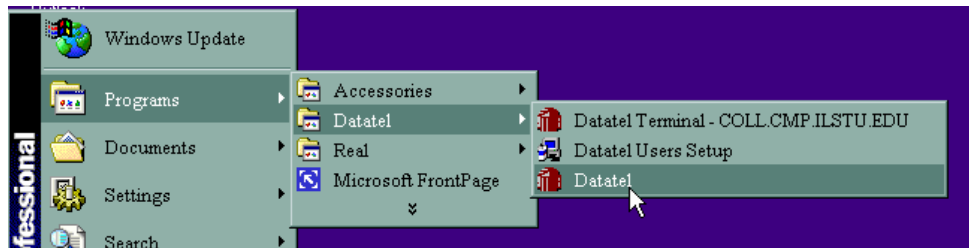


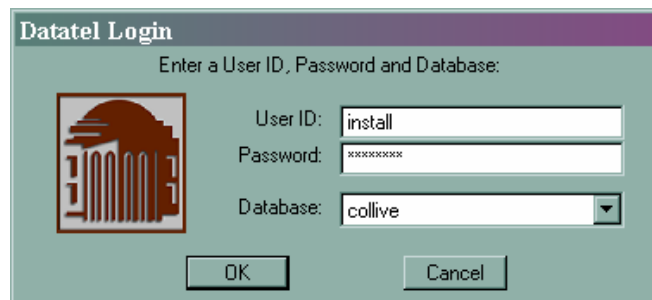
TESTING INSTALLATION AND PRINTING FOR DATATEL'S UI 1.0 GUI CLIENT



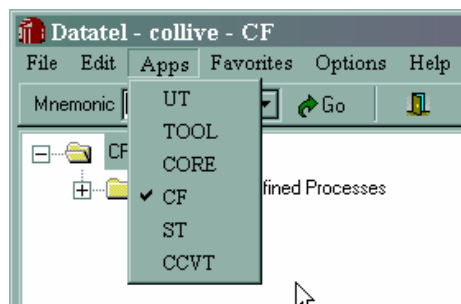
Either click on Datatel UI icon on desktop (installed by default) or select from the menu: Start > Programs > Datatel > Datatel:




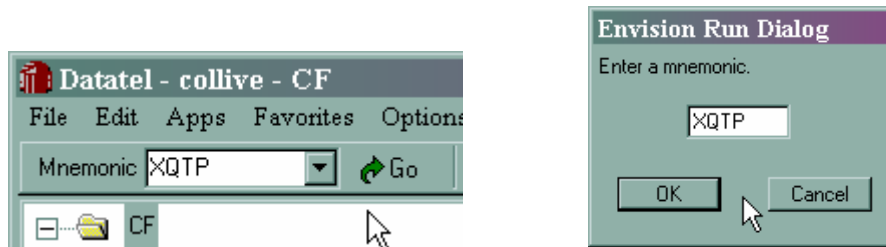
Enter **User ID** (install) and **Password** (redbirds) in lower case; either click the **OK** button or hit <enter>. You may also enter the user's User ID and password to verify that his/her account is valid and operational.



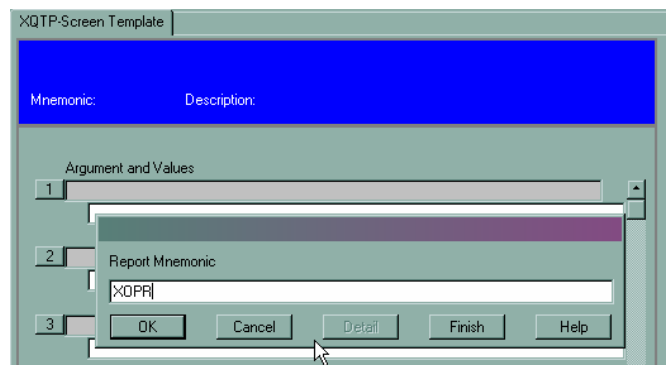
UI installs by default in the UT application; this must be changed by selecting **CF** on the **Apps** pulldown option on the Menu bar. You will probably need to click on CF twice (there is a bug . . .)



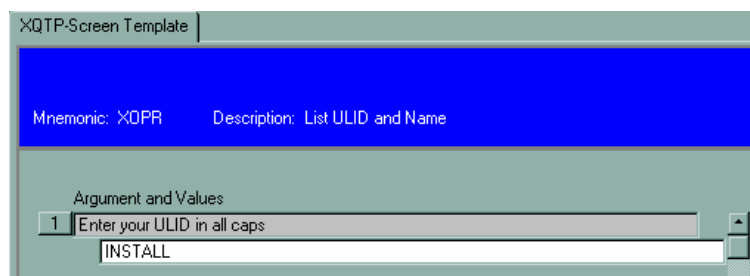
Either type **XQTP** (it is not case-sensitive) in the Mnemonic field on the Address Bar then click on the Go button  or from the **File** menu, choose **Run** then type **XQTP** in the Envision Run Dialog Box.



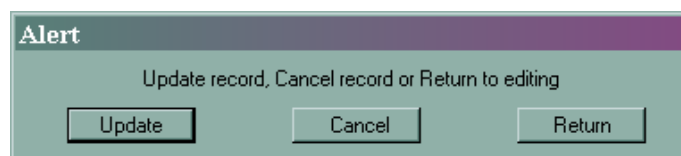
When the **XQTP** screen appears, type **XOPR** in the **Report Mnemonic** dialog box:



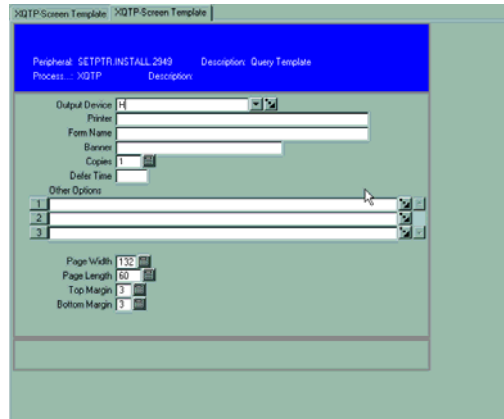
Following the onscreen instructions, type **INSTALL** (or any valid Datatel User ID) in all caps,




then click the **Save** icon  on the toolbar . An **Alert** dialog box will appear; click <enter> or click on Update.

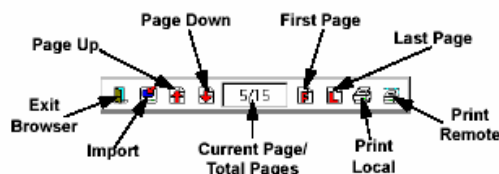
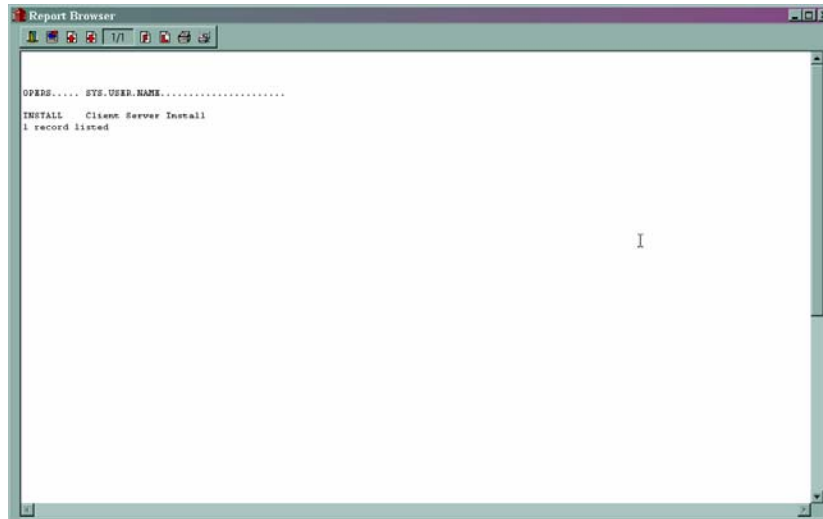


A printer selection screen will appear:

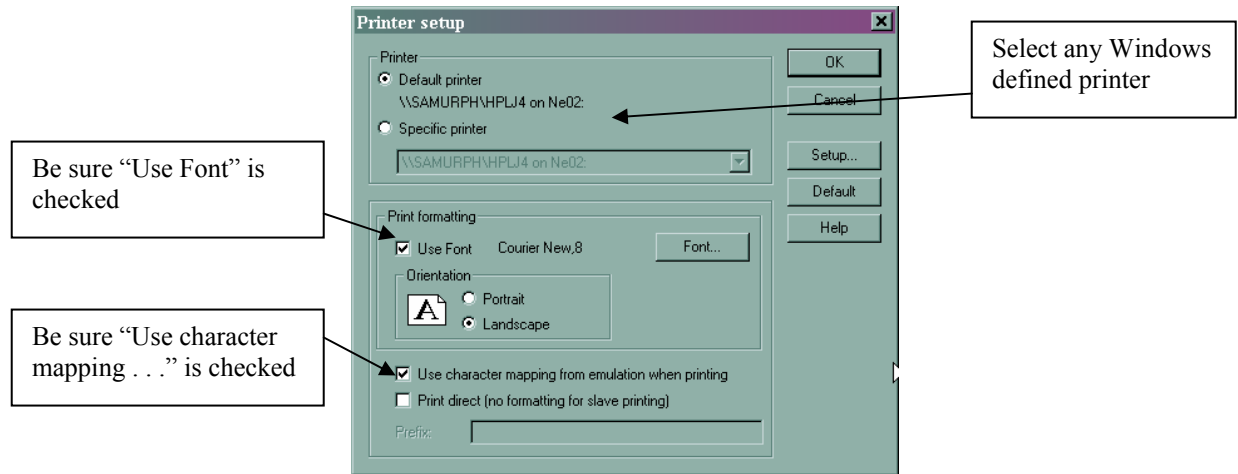


The recommended printing option for UI GUI is PRINT LOCAL, which involves sending the print job to a HOLD file, which will display the output to the screen and allow the screen contents to be sent to the Windows-defined default printer. To select this option, change the **P (Printer Spooler)** in the Peripheral Device field to **H (Hold/Browse File Output)**, then click the **Save** icon.

A Report Browser will appear. To print to any Windows defined printer to which the user has access, click on the **Print Local** button , which will bring up the Windows print dialog box and allow the print job to be sent to any printer to which the user has access.



Keys to the Report Browser toolbar:



The **Use Font** and **Use character mapping from emulation when printing** boxes must be checked. Either Courier New 7 or Courier New 8 should work for all reports. Avoid all proportional fonts or fonts larger than 8.

We are discouraging UI GUI users from using RPM. If RPM was functional for PowerView, it may work for UI – it is an independent application – but users will not like the appearance of their reports. We have eliminated RPM queues for all users except UI Terminal (wIntegrate) users.

When test is complete, click on the **Exit Browser**  button to return to the application workspace. Click the **Exit Application** button  on the toolbar to exit the application.

Do not use the close function on the System Menu Box to exit UI 1.0 GUI -- although it gives you keyboard control of the UI workspace as a whole (minimizing, maximizing and closing the workspace), it does not always reliably close the application.