

Features of User Interface 1.0

User Interface 1.0 offers several additional features in the form of control buttons that assist you with viewing and editing data, as shown below.

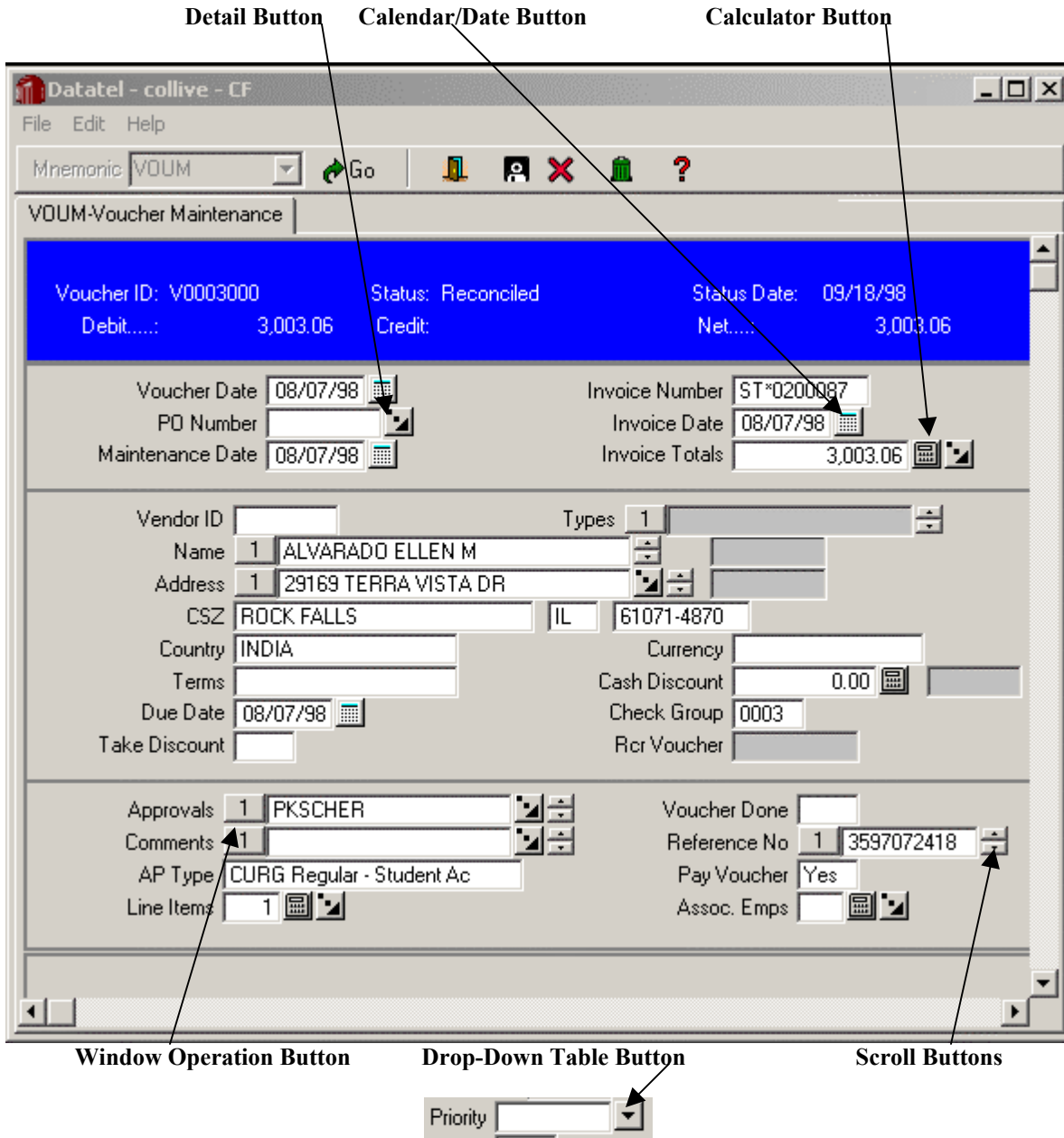





Figure 2-1: User Interface

Detail Button

A Detail button  appears to the right of each Detail field and allows you to access the associated detail form. This button functions in the same way as the ellipsis  in PowerView.

Window Operation Button

A Window Operation button  enables you to insert or delete a row of data. When you click the Window Operation button, the Select Window Operation dialog box is displayed, as shown below.

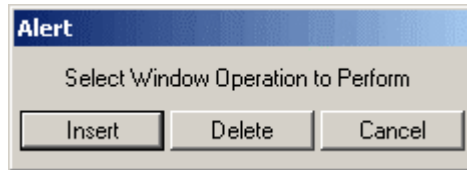


Figure 2-2: Select Window Operation Box

- Click **Insert** to insert a new row above the current row.
- Click **Delete** to delete the current row.
- Click **Cancel** to leave the row unchanged and return to editing.

Scroll Buttons

Scroll buttons enable you to view multiple values. There are two different types of scroll buttons:



Small buttons appear to the right of fields that display one value at a time.

Larger buttons appear to the right of fields that display two or more values at a time.

Date/Calendar Button


A Date/Calendar button  appears to the right of each date field. Click the Date/Calendar button to display the calendar browser, as shown below.



Figure 2-3: Date/Calendar Feature

Click the single arrows to scroll the calendar backwards or forwards by month, or the double arrows to scroll backwards or forwards by year. Click the desired date in the body of the calendar to select it. Or you may simply type the date into field.

Calculator Button



A Calculator button  appears to the right of each numeric field. Click the Calculator button to display a calculator, as shown below.



Figure 2-4: Calculator Feature

Drop-Down Table Button

A Drop-Down Table button  appears to the right of each field that has a predetermined set of valid entries. Click the Drop-Down Table button to display a validation code table, as shown below.

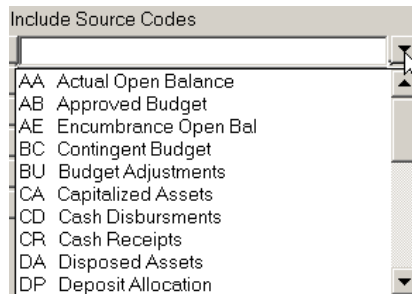


Figure 2-5: Drop-Down Table Box – Validation Code Table